

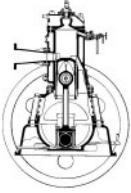


| | |
|-----------------|---------------------------------------|
| Object:- | Allen Engineering Review No 24 |
|-----------------|---------------------------------------|

| | | | |
|-----------------------|-----------------------------|-----------------------|-------------|
| Object ID:- | 1913 | Accession No:- | IF:2007:161 |
| Date:- | 1950-01-05 | Works Number:- | AER No 24 |
| Category:- | Magazine | | |
| Collection:- | W.H. Allen Heritage | | |
| Manufacturer:- | W. H. Allen, Sons & Co. Ltd | | |
| Made In:- | Bedford, UK | | |

| |
|---------------------------------------|
| Description:- |
| Number 24, Company engineering review |

| | |
|--------------------|-----------|
| Status:- | Excellent |
| Condition:- | Unknown |



The ALLEN ENGINEERING REVIEW



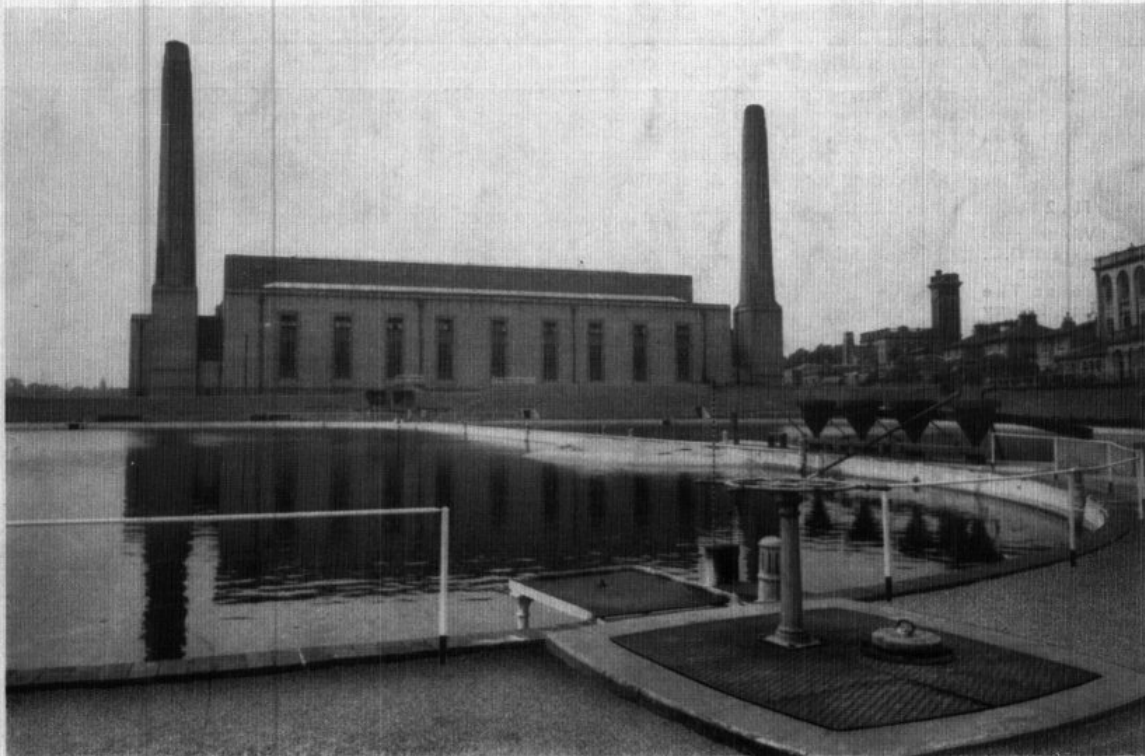
Published by
W. H. ALLEN, SONS & CO., LTD., BEDFORD, ENGLAND.

No. 24

MAY, 1950

CONTENTS

| | PAGE | | PAGE |
|---|------|--|------|
| POWER FROM PROCESS STEAM | 3 | EPICYCLIC GEARING | 14 |
| BRITAIN'S LARGEST WATERWORKS PUMPING STATION— THE HAMPTON PUMPING STATION OF THE METRO- POLITAN WATER BOARD, LONDON | 10 | BACK-PRESSURE STEAM ENGINE GENERATING PLANT RUNNING IN PARALLEL WITH THE PUBLIC ELECTRICITY SUPPLY | 18 |



Britain's Largest Waterworks Pumping Station