

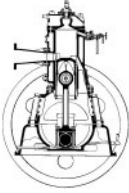


Object:-	Tangye Vertical Ram Pumps
-----------------	----------------------------------

Object ID:-	3772	Accession No:-	IF:2012:010
Date:-	1940-01-01	Works Number:-	567
Category:-	Catalogues		
Collection:-	Internal Fire Library		
Manufacturer:-	Tangyes Ltd		
Made In:-	Birmingham, England		

Description:-
Brief catalogue of heavy duty ram pumps for working 100-750ft heads.

Status:-	Available
Condition:-	Excellent



VERTICAL TREBLE RAM PUMPS: 100-750 FT. HEAD

THE Pumps described and illustrated in this publication comprise a group of several series, all embodying the feature of simple, compact and rigid design. At the same time, as is very obvious from the illustrations, accessibility is ideal. These Pumps are a standard product, built to gauge and spares are always available. Pump for heads up to 300 ft. are built in series for stock. All heads are covered up to 750 ft. and the pumps can be supplied for belt, vee rope, or gear drive.

SPECIFICATION OF 100 AND 200 FEET SERIES PUMPS

The pump is self-contained, having the pump bodies and valve chambers cast together with feet to act as baseplate, the standards and countershaft brackets being bolted to the top of the pump chamber; the design is compact and rigid.

The fast and loose pulleys are carried on a steel countershaft running in adjustable gunmetal bearings, and drive through machine-cut spur gearing. The crankshaft is of Meehanite, running in adjustable gunmetal bearings and carrying on its outer ends the main spur wheel and a turned disc, which have large pins for working the two outside rams.

The connecting rods have adjustable gunmetal-bushed bearings at the crank-pin, the other end having a solid bronze bush.

The rams are of cast-iron, working through gunmetal-bushed glands and white-metal neck bushes.

The valves and seats are of gunmetal, with spindles and springs of bronze.

The suction inlet and delivery outlet are both at the back of the pump body, and an **air vessel is fitted to the delivery branch.** (When the suction lift is considerable, a vacuum vessel is recommended to be fitted into the suction pipes also. This is not included with the pump, but a code word is given below, so that it may be specified when necessary).

Visible drop **lubricators** to the connecting rods, large **oil boxes** to countershaft and crankshaft bearings, **loose flanges** for suction and discharge branches, and a set of **spanners are included** with the pump.

Each pump is run and tested with water before leaving the Works.

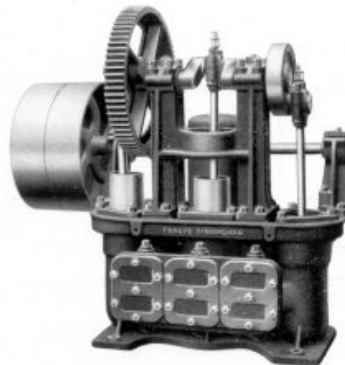
SPECIFICATION OF 300 FEET SERIES PUMPS

The specification above for 100 and 200 feet Pumps generally applies except in respect to the motion work. The 300 ft. pumps have bored **guides to the rams** and a **double gear drive** from the countershaft to crankshaft. See illustration overleaf. Large **oil boxes are included** for lubrication of the ram guides.

MOTOR-DRIVEN PUMPS—ALL HEADS

The standard Motor drive is by "V" belt between motor and pump countershaft, and the Speeds given for motors are based on this understanding. Direct Geared Sets can be supplied, but in that case slower speed Machines are advisable. All Motor driven pumps are fitted with a relief valve.

100-200 ft. Pump arranged for belt drive. For 300 ft. Pump, see page 2.



For alternative methods of drive, see page 4.